

3 EASY STEPS TO ELIMINATE HEAD LICE

1 Apply LiceMD



- Before you begin gather the following items:
- Clean bath towel preferably white (to see the lice)
 - Box of facial tissues or paper towels
 - Large bowl of warm water or nearby sink
 - Bobby pins or hair clips
 - Bright light source
 - Regular wide-toothed comb for parting and detangling hair

If person being treated wears glasses or contacts, remove before starting.

- Wrap towel around person's shoulders and neck. Apply LiceMD to DRY hair only. Avoid contact with eyes.
- Begin application at the nape of the neck. Part hair about every 1" to 1½" and apply directly to scalp while working product through to the ends of the hair.
- Pay special attention to the areas behind the ears and nape of the neck, where lice, eggs and nits (empty eggshells) are most likely to be found.

Tip: For longer hair, pin hair up and apply to nape of neck first. Then apply to the rest of the hair.

- Massage until hair and scalp are thoroughly wet with product.
- Important:** When finished applying product, wait 10 minutes before combing out lice, eggs, and nits.

USAGE GUIDELINES	
Hair Length	Approximate Amount for 1 Child
Short (ear-length or shorter)	1-2 oz.
Medium (shoulder length)	2-3 oz.
Long (past shoulder length)	3-4 oz.

- WARNINGS:**
- For external use only.
 - Keep out of reach of children.
 - Avoid contact with eyes. If contact occurs, rinse with water.

Who gets head lice?

Anyone can get head lice. Lice infestation is not due to poor hygiene. A person gets lice from head-to-head contact with an infested person or by wearing a hat, or sharing a comb from an infested person.

What are head lice?

Head lice are small parasitic insects about the size of a sesame seed that live on the human scalp. They are brownish, tan or gray in color and move by crawling. They feed on human blood and without it they don't survive for more than two days.



3486600

2 Comb Out Lice, Eggs & Nits



Important: Combing is an essential step for complete lice elimination.

- Proper combing takes time. A distraction for your child (e.g. book, TV, video game) can help.
- While hair and scalp are wet with LiceMD, comb hair with a regular comb to take out snarls and tangles
- Next, separate hair into quarters (front left/front right, back left/back right).
- Take a small section of hair (about ½" to 1") in your fingers. Take the enclosed lice comb, and gently place the teeth as close to the scalp as possible and pull comb away from the head through to the ends of the hair.

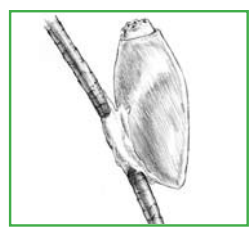


Important: Make sure all the hair goes through the teeth as you comb. Eggs are found on the hair shaft near the hair roots so it is important to get the teeth very close to the scalp.

- Wipe eggs and nits from the teeth of the comb with a clean tissue or paper towel.
- Pin back the section of hair you just finished combing with a bobby pin or hair clip.
- Take another small section of hair and repeat the combing procedure until all sections are complete.

- LiceMD Gel is very slippery. This makes comb out easier. But, spills or drips on floors can lead to injury from slips or falls. Clean Gel spills and drips with soap and warm water, then dry thoroughly.

An adult female louse will lay about six eggs per day. The eggs are firmly attached to the hair shaft close to the scalp. Eggs (or nits) are about the size of a knot in a thread and can be white, yellowish, brownish or grayish. Unlike lint or dandruff, they do not comb out of the hair easily because they are attached to hair. Eggs will hatch in about eight to ten days. The egg shells will remain attached to the hair even after hatching.



After hatching, lice are in the nymph stage. Nymphs are smaller than adult lice. They reach adulthood in nine to twelve days. Adult lice survive around five weeks. The adults prefer a warm, dark environment. They can often be found at the nape of the neck, under a ponytail or behind the ears of an infested person.

3 Shampoo Hair



After you have combed and pinned the entire head, remove all bobby pins or hair clips and wash hair thoroughly with regular shampoo and warm water. It is recommended that the hair be washed in a sink or over a tub. Keep a towel over face to keep product out of the eyes.

Two or more washings may be needed to completely remove LiceMD from the hair. Wash all combs and hair clips in hot (above 130°F) soapy water for 5 to 10 minutes, and discard any used tissues or paper towels by putting them in a plastic bag and disposing of them immediately.

Next Steps

Clean Home/Prevent Reinfestation

- Wash all clothing, bedding and towels used by infested persons in hot water (above 130°F). Dry items at highest heat for at least 20 minutes. Dry clean items that can't be washed
- Disinfect hair products such as combs, brushes, and hair accessories by soaking in hot (above 130°F) soapy water for 5 to 10 minutes.
- Place stuffed toys in plastic bags and seal for 2 weeks.
- Vacuum rugs, carpets, mattresses and car seats thoroughly. Dispose of vacuum cleaner bags immediately after use.

Check entire family for head lice for 10 days.

- Inspect scalp and hair each day for lice, eggs and nits for 10 days. If lice, eggs or nits are seen, you may repeat Steps 1-3 anytime.

How to check for head lice.

- Examine the head under bright natural light.
- Part the hair and closely examine the scalp, especially the nape of the neck and behind the ears. Lice will quickly move away from the light.
- To find the eggs and nits, look for small white or yellowish-brown specks that are about the size of a poppy seed. Eggs are found on the hair shaft close to the scalp. Newly laid eggs are almost transparent, so it is helpful to examine the hair from different angles of light.
- To tell the difference between eggs and dandruff, try to dislodge them from the hair shaft. If they are not easily removed, they are probably eggs.


LiceMD[®] NEW!

LICE & EGG TREATMENT

LiceMD

Pesticide Free Breakthrough!

Eliminates Lice & Eggs



• Non-Toxic, Safe & Odorless

• Helps Prevent Re-Infestation

• 100% Effective Lice Comb*

Liquid Gel 4 FL. OZ. (118 ml)
Lice Comb and Instructions